

Who refines feel and water resistance? We do.

Antaron™ (Ganex™) sensory polymer

Skin care polymer providing non-greasy feel and improved water resistance

Description

Antaron (Ganex) Sensory is a water dispersible polymer that has a unique hydrophobic character, and is capable of forming a mesh over the sunscreen film that will lay on the skin. The mesh protects the film, giving it great water resistance and imparting a superior sensory feel when the formulation dries. This functionality enhances the homogenous distribution of UV filters in the formulation. Consumer data generated on formulations containing the polymer confirmed the breakthrough sensory feel it imparts on formulations with and without sun filters.

Formulation to inspire

SUNsory active fluid SPF 50+ (#200-10058)

- The fluid applies very softly on the skin and absorbs very nicely, leaving the skin feeling moisturized and protected.
- It applies very smoothly on the entire body for maximum protection at the beach or during outdoor sport activity.

SUNsory light daily cream-in-gel SPF 20 (#200-10059)

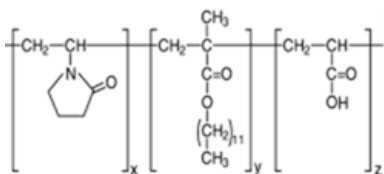
- This gel cream is a very light and fresh texture that quickly absorbs into the skin, leaving behind a soft, powdery feel.
- The low emulsifier polymer-stabilized formulation relies on the combination of UltraThix™ P-100 polymer, RapiThix™ A-60 polymer and Antaron/Ganex Sensory to provide the formulation with stability and unique sensory experience.

SUNsory rebound balm-in-gel SPF 20 (#200-10060)

- This distinctive bouncy texture takes sun care textures to an entirely different level. The buttery formulation applies very easily leaving the skin soft and conditioned.
- This unique emulsifier-free formulation was achieved by combining Ganex/Antaron Sensory with FlexiThix™ and RapiThix polymers that provided enhanced cushion and elasticity to the texture.

Chemistry of Antaron (Ganex) sensory polymer

INCI name: VP/Acrylates/Lauryl Methacrylate Copolymer



ashland.com / efficacy usability allure integrity profitability™

KEY FEATURES:

Sensory feel:

Consumers prefer the non-greasy feel and skin comfort, even in high SPF formulations. This can help increase the user's confidence in end use product effectiveness and help meet active outdoor consumer needs.

Water resistance:

The polymer architecture provides high performance water resistance, which helps sunscreen formulators develop products with substantial water resistance.

Emulsion stability:

It is the first choice of formulators as it's cold processable, water dispersible and easy to formulate with - which helps achieve improved emulsion stability.

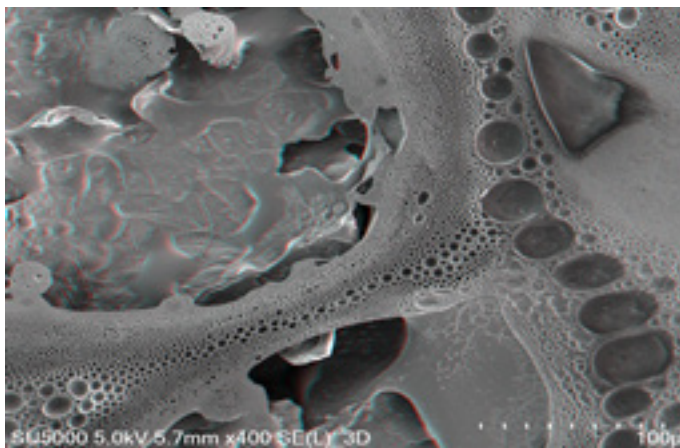


Ashland
always solving

Formulation guidelines

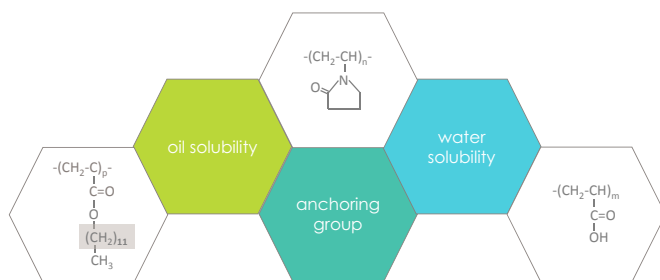
Formulator Benefits	Improves stability of emulsions, is easy to formulate with, provides high performance water resistant claims and reduced sand-stickiness, and enhances the development of high oil phase emulsions without negative aesthetics
Tips	<ul style="list-style-type: none"> - Add to water phase pre- or post-emulsion - Can also be directly added to the oil phase - Neutralization required, optimum at pH 5.5 – 6.5 - Cold processable, heat not required
Applications	<ul style="list-style-type: none"> - Sunscreen emulsions and anhydrous - Face and body care - Color cosmetics
Use Level	0.5-3.0%

Film former texturizer



Antaron (Ganex) Sensory (#200-10062 – EM 3D picture)

How to design such a polymer?



Europe — Switzerland
Tel: +41 52 560 55 00
Fax: +41 52 560 55 99

India — Maharashtra
Tel: +91 22 61489696
Fax: +91 22 61712514

Asia Pacific — Singapore
Tel: +65 6775 5366
Fax: +65 6776 9690

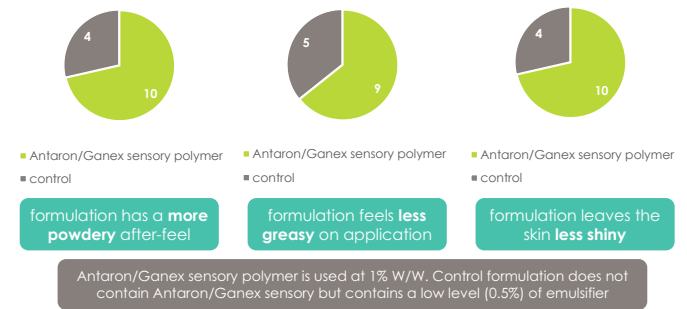
Middle East, Africa — Dubai, U.A.E.
Tel: +971 4 3818515
Fax: +971 4 3818516

Latin America — Mexico
Tel: +52 55 52 76 6121
Fax: +52 55 2614 2939

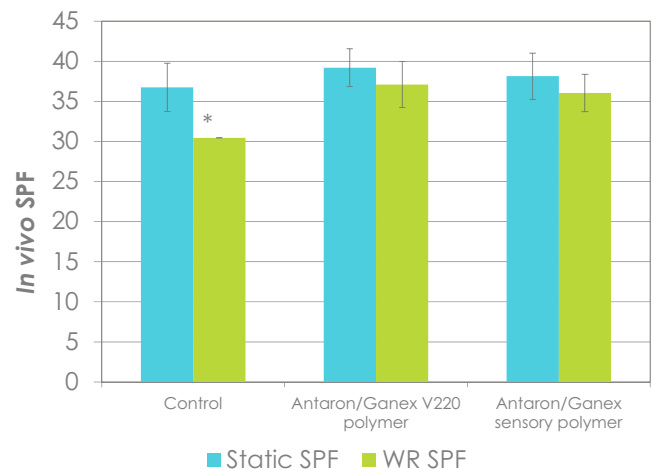
personalcare@ashland.com
ashland.com

® Registered trademark, Ashland or its subsidiaries, registered in various countries
™ Trademark, Ashland or its subsidiaries, registered in various countries
© 2017, Ashland / PC-13835

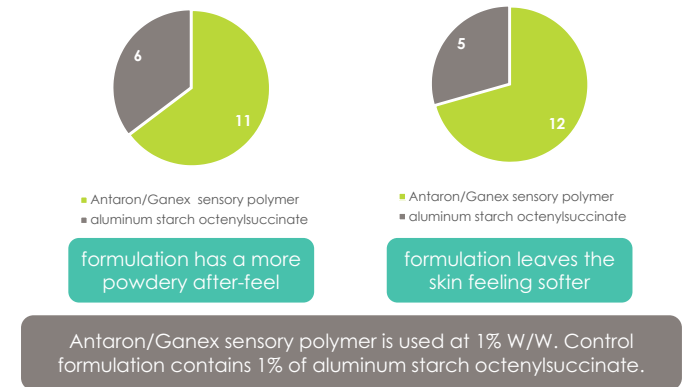
Sensory comparison in SPF formulation SUNsory rebound balm-in-gel SPF20



In vivo water resistance – nonionic base SPF 35



Sensory comparison in non-SPF emulsion



The information contained in this brochure and the various products described are intended for use only by persons having technical skill and at their own discretion and risk after they have performed necessary technical investigations, tests and evaluations of the products and their uses. Certain end uses of these products may be regulated pursuant to rules or regulations governing medical devices, drug uses, or pesticidal or antimicrobial uses. It is the end user's responsibility to determine the applicability of such regulations to its products.

All statements, information, and data presented herein are believed to be accurate and reliable, but are not to be taken as a guarantee of fitness for a particular purpose, or representation, express or implied, for which seller assumes legal responsibility. No freedom to use any patent owned by Ashland, its subsidiaries, or its suppliers is to be inferred.

